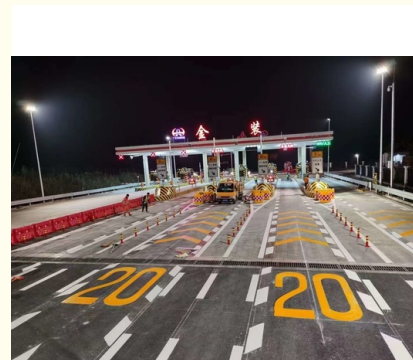


Hot Melt Thermoplastic Road Marking Paint White Line 1mm Long Lasting

Our Product Introduction

Basic Information

- Place of Origin: CHINA
- Brand Name: CREKOAT
- Certification: TDS, MSDS
- Model Number: ARP-001
- Minimum Order Quantity: 500KG
- Packaging Details: One Pack: 25 kg in a plastic bag, Custom packaging is available.
- Delivery Time: 5-8 working days
- Payment Terms: T/T, Western Union, MoneyGram
- Supply Ability: 300, 000 kg per day



Product Specification

- Features: White Line
- Name: Road Marking Paint
- Materials: Thermoplastic Paint
- State: Powder
- Mixing Ratio: One Component
- Shelf Life: 12 Months
- Thickness: 1mm~3mm
- Application: Hot Melt
- Highlight: **Hot Melt Road Marking Paint,
Thermoplastic Road Marking Paint,
White Line Marking Paint 1mm**

for more products please visit us on epoxyresinfloorcoating.com

Product Description

Long Lasting High Durability Thermoplastic Road Marking Paint

Product Descriptions:

Product Name	Thermoplastic Traffic Paint
Drying time (25°C)	Touch dry≤0.2 hours / Hard dry≤6 hours
Adhesion strength, S	≥60
Flexibility, mm	≤0.03
Moh's hardness	≥8
Coverage (advise 2 coats)	0.15kg/sqm per coat

Quick Details:

Thermoplastics typically have a service life of 3-5 years, depending on conditions. In winter climates, thermoplastics are very susceptible to snow plows due to its raised structure and can be sheared completely off, leaving no marking on the road. In addition, thermoplastics are sensitive to changes in temperature in which "freeze-thaw" will typically cause cracks, pinholes, and grooves throughout the entire marking. Thermoplastics must be heated at a very high temperature, between 400 and 450 F, to be effective. This high temperature, besides the risk of burns, will also lead to application errors, most noticeably a darkening of the material should it be applied too hot, or reside in the application kettle too long. Finally, thermoplastic performs poorly on concrete unless a primer is applied beforehand, which adds a second application step.

Features:

1. Good adhesion
2. High durability
3. Quick drying
4. Low VOC
5. Fast Application
6. Resistant to color fading

Advantages:

Superior environmental impact - as measured by life-cycle analysis, compared to other pavement marking technologies. Enhanced retention of glass beads and greater flexibility - for extended retroreflectivity and improved night-time visibility. Fast-drying properties - with fast-dry-to-no-pickup and resistance to early rain showers under a wide range of climatic conditions. Improved wear properties - over various bituminous and concrete road surfaces. Low-VOC formulations - that exceed most road-marking paint regulation.



Guangdong Crekoat New Materials Co., Ltd.



+8615017402317



info@crekoat.com



epoxyresinfloorcoating.com

No.38, Fengguo Industrial Avenue, Sanshui District, Foshan City, China