

100% Solid Poly Epoxy Resin Coating Metallic Epoxy Floor System

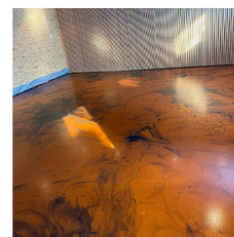
Our Product Introduction

for more products please visit us on epoxyresinfloorcoating.com

Basic Information

- Place of Origin: CHINA
- Brand Name: CREKOAT
- Certification: TDS, MSDS
- Model Number: CK-MTL2001
- Minimum Order Quantity: 300KG
- Price: US\$4.5-6.5/Kg
- Packaging Details: Bottle/Cartron/Wooden Box
- Delivery Time: 3-7 Working days
- Payment Terms: T/T, Western Union, MoneyGram
- Supply Ability: 1000000 Ton/Year

CREKOAT



Product Specification

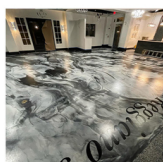
- Trademark: Epoxy Floor Coating
- Typical: Cures Clear With A Beautiful Finish
- Materials: Clear Epoxy Resin And Hardener
- Key Words: Glass Like Metallic Finish
- Application: Wood, Brick, Ceramic, Concrete
- Mixing Ratio: 2:1 By Weight
- Pot Life: 30 Minutes
- Shelf Life: 12 Months
- Highlight: Solid Poly Epoxy Resin Coating, Metallic Poly Epoxy Resin Coating

CREKOAT

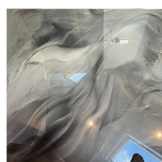


More Images

CREKOAT



CREKOAT



CREKOAT



Product Description

100% Solids Poly Epoxy Resin Metallic Epoxy Floor System

Quick Details Of Poly Epoxy Resin:

In most people's minds, metallic epoxy floors are just for decorative aesthetics and therefore do not offer the same benefits as other epoxy coating systems. The truth is, when a 100% solids epoxy system (or equivalent) is combined with decorative metallic pigments, you will produce the most vibrant, durable and glossy finishes with seamless surfaces and a mirror-like appearance. Therefore, metallic epoxy flooring has the advantage of flooring systems designed for commercial or industrial installations.

Will your surfaces be exposed to a lot of sunlight? Add an extra layer of protection to surfaces by adding a protective top coat. These outstanding applications of polyaspartic and polyurea topcoats provide excellent durability as well as chemical, UV and solvent resistance.

Features Of Poly Epoxy Resin:

1. Resistance to chemicals and stains
2. Superbly hygienic
3. Long service life (depending on location)
4. Easy to apply, clean and maintain
5. Naturally de-foaming with no ripples
6. Tough, high gloss, water resistant coating

Advantages Of Poly Epoxy Resin:

Metallic epoxy floor coating is a low yellowing epoxy resin mixed with metallic pigments. Tiny, shimmering pigments are mixed into the epoxy and poured onto the floor or substrate. When these paints are stirred by a brush or roller, they gather, separate, twist and reflect light at different angles. Eventually, the epoxy hardens and the metallic pigments lock into place, giving them a three-dimensional, swirly appearance. Installation technique is what determines the final look of your floor and is a key part of achieving the desired look.

Metallic epoxy floor coatings are not only aesthetically pleasing, but also offer many other benefits. Metallic epoxy floor coatings can be customized to be extremely durable, low yellowing, seamless, antimicrobial, non-slip and chemical resistant. These floors not only look beautiful, but can meet all your performance needs. They are perfect for waiting rooms, exhibition rooms, restaurants, galleries and more.

Product Descriptions Of Poly Epoxy Resin:

Item	Epoxy Resin(A)	Hardener(B)
Appearance	Liquid	Liquid
Color	Transparent	Transparent
Viscosity@25°C	600-800 mPa·s	50-150
Density, g/cm ³	1.07±0.05	0.95±0.03
Mix Ratio	2:1 by weight	
Hardness	Shore, D80-85	
Pot Life	30-40mins@25°C	
Curing Time	16-24hrs@25°C, 12-15hrs@35°C 24hrs, Dry Completely	
Max Pour Depth	1-3 mm	
Shelf Life	12 Months	
Application	Industrial Use - Garages; Warehouses; Airports and hangars; Commercial Use - Shopping malls and boutiques; Hotels; Offices; Showrooms; Restaurants; Hospitals; Schools; Bar Tops, Table Tops. Residential Use – Entrances and hallways; basements; entertainment rooms; bathrooms; kitchens and living rooms;	



Guangdong Crekoat New Materials Co., Ltd.



+8615017402317



info@crekoat.com



epoxyresinfloorcoating.com

